



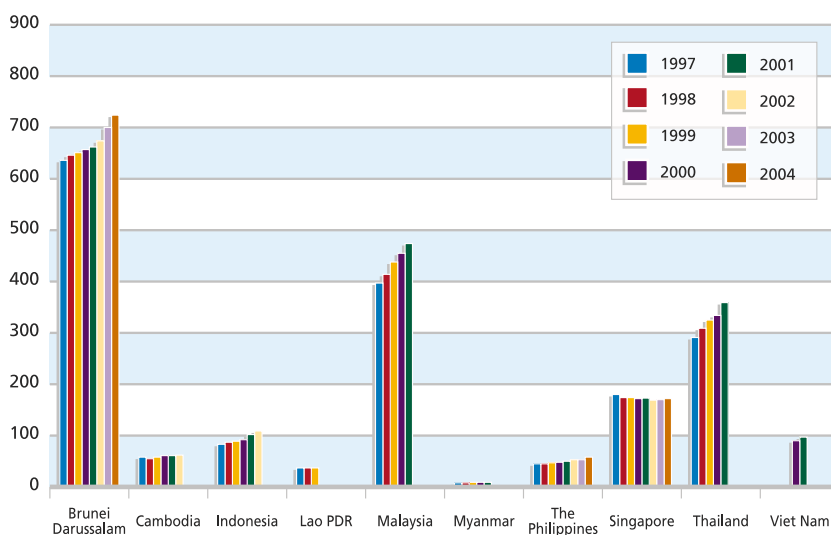
Chapter VII
Transport and Communication

Table VII.1.
ASEAN Road

Road Infrastructure	Year	Brunei Darussalam	Cambodia	Indonesia	Lao PDR
(1)	(2)	(3)	(4)	(5)	(6)
Total Length (km)	1997	2,693	34,000	341,467	3,016
	1998	2,896	34,000	355,363	3,016
	1999	3,115	34,000	355,951	3,016
	2000	3,272	–	355,951	–
	2001	3,299	–	361,782	–
	2002	3,358	–	–	–
	2003	3,471	–	–	–
	2004	3,561	35,769	–	–
Length of Paved Network (km)	1997	2,533	1,500	192,668	1,734
	1998	2,722	1,500	168,072	1,797
	1999	2,929	1,500	203,374	2,006
	2000	3,030	–	203,214	–
	2001	3,063	–	212,935	–
	2002	3,122	–	–	–
	2003	3,296	–	–	–
	2004	3,386	1,996	–	–

Sources: Compiled from data submission, websites and yearbooks of AMCs' national statistical offices and relevant departments/ministries as of October 2005; UNESCAP Statistical Indicators for Asia and the Pacific 2004 Compendium (online edition as of November 2005); and UNESCAP Asia-Pacific in Figures 2004 (online edition as of May 2005).

Graphic VII.1.
Total Vehicles per 1,000 Population in ASEAN Countries, 1997-2004



Infrastructure, 1997-2004

Malaysia	Myanmar	The Philippines	Singapore	Thailand	Viet Nam
(7)	(8)	(9)	(10)	(11)	(12)
63,853	26,777	27,650	3,017	50,728	–
66,437	27,619	28,174	3,038	51,180	–
64,686	27,966	29,523	3,066	51,339	–
66,445	28,596	29,056	3,100	50,724	15,436
71,814	28,790	29,878	3,119	51,544	15,571
72,165	–	30,030	3,149	–	–
77,200	–	26,572	3,164	–	–
77,695	–	27,853	3,188	–	–
47,542	18,969	15,694	3,017	48,282	5,624
50,215	21,216	16,027	3,044	49,130	–
48,720	21,675	16,623	3,066	49,922	–
50,621	22,630	17,020	3,091	49,166	11,206
55,933	23,179	18,144	3,119	50,279	11,258
56,366	–	–	3,149	–	–
59,513	–	–	3,164	–	–
59,254	–	19,903	3,188	–	–

Graphic VII.2.

Total Goods Vehicles per 1,000 Population in ASEAN Countries, 1997-2004

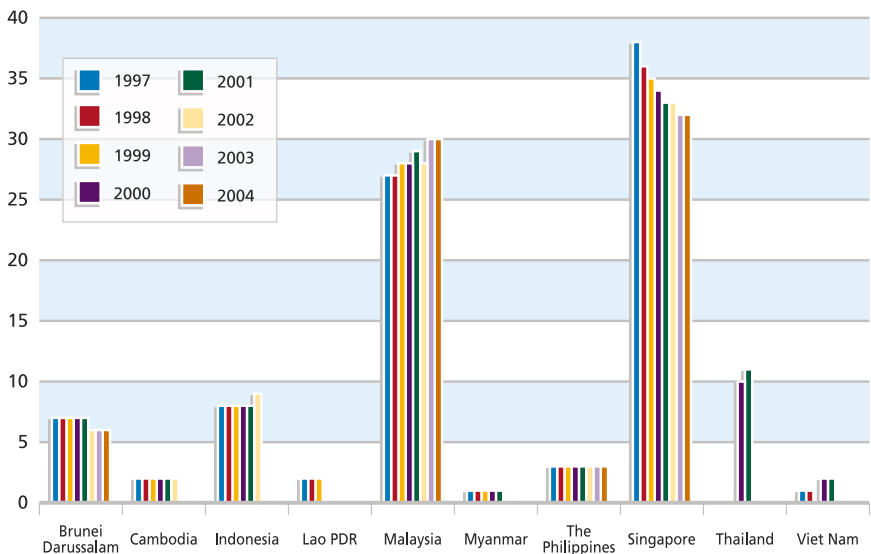


Table VII.2.
ASEAN Road

Road Fleet	Year	Brunei Darussalam	Cambodia	Indonesia	Lao PDR
(1)	(2)	(3)	(4)	(5)	(6)
Total Vehicle Registration in ('000)	1997	192	601	16,535	181
	1998	200	634	17,612	184
	1999	206	672	18,224	187
	2000	213	738	18,975	–
	2001	220	798	21,201	–
	2002	232	829	22,985	–
	2003	245	–	–	–
	2004	259	–	–	–
No of Goods Vehicles ('000)	1997	17	19	1,548	10
	1998	17	21	1,587	9
	1999	17	24	1,629	10
	2000	17	28	1,707	–
	2001	18	29	1,760	–
	2002	18	30	1,865	–
	2003	18	–	–	–
	2004	18	–	–	–
Total Vehicles per 1,000 population	1997	636	58	83	37
	1998	646	55	87	37
	1999	651	58	89	37
	2000	657	61	92	–
	2001	662	61	102	–
	2002	674	62	109	–
	2003	700	–	–	–
	2004	724	–	–	–
Total goods vehicles per 1,000 population	1997	7	2	8	2
	1998	7	2	8	2
	1999	7	2	8	2
	2000	7	2	8	–
	2001	7	2	8	–
	2002	6	2	9	–
	2003	6	–	–	–
	2004	6	–	–	–

Sources: Compiled from data submission, websites and yearbooks of AMCs' national statistical offices and relevant departments/ministries as of October 2005; UNESCAP Statistical Indicators for Asia and the Pacific 2004 Compendium (online edition as of November 2005); and UNESCAP Asia-Pacific in Figures 2004 (online edition as of May 2005).

Fleet, 1997-2004

Malaysia	Myanmar	The Philippines	Singapore	Thailand	Viet Nam
(7)	(8)	(9)	(10)	(11)	(12)
8,550	376	3,194	683	17,666	-
9,141	387	3,317	681	18,861	-
9,930	424	3,534	689	20,097	-
10,599	439	3,701	693	20,836	6,966
11,303	445	3,866	708	22,589	7,621
12,022	-	4,188	707	-	-
12,819	-	4,292	711	-	-
13,765	-	4,761	727	-	-
575	57	243	143	-	69
599	59	231	141	-	73
643	54	243	139	-	-
665	54	248	135	653	178
690	53	254	137	674	194
713	-	258	136	-	-
740	-	255	135	-	-
772	-	268	137	-	-
397	8	45	180	291	-
414	8	45	174	309	-
438	9	47	174	325	-
451	9	48	172	334	90
471	9	50	173	359	97
490	-	53	169	-	-
512	-	52	170	-	-
538	-	57	172	-	-
27	1	3	38	-	1
27	1	3	36	-	1
28	1	3	35	-	-
28	1	3	34	10	2
29	1	3	33	11	2
28	-	3	33	-	-
30	-	3	32	-	-
30	-	3	32	-	-

Table VII.3.
ASEAN Railways

Railways, Passenger and Freight	Year	Brunei Darussalam	Cambodia	Indonesia	Lao PDR
(1)	(2)	(3)	(4)	(5)	(6)
Route Length (Km)	1997	n.a.	632	4,552	n.a.
	1998	n.a.	632	4,565	n.a.
	1999	n.a.	632	4,616	n.a.
	2000	n.a.	-	-	n.a.
	2001	n.a.	-	-	n.a.
	2002	n.a.	-	-	n.a.
	2003	n.a.	-	-	n.a.
	2004	n.a.	-	-	n.a.
Passenger Carried ('000)	1997	n.a.	553	158,667	n.a.
	1998	n.a.	438	169,575	n.a.
	1999	n.a.	431	160,300	n.a.
	2000	n.a.	-	191,600	n.a.
	2001	n.a.	-	188,400	n.a.
	2002	n.a.	-	175,716	n.a.
	2003	n.a.	-	154,723	n.a.
	2004	n.a.	-	149,918	n.a.
Passenger-Kilometer (Mn)	1997	n.a.	51	15,518	n.a.
	1998	n.a.	44	16,196	n.a.
	1999	n.a.	50	18,585	n.a.
	2000	n.a.	45	19,228	n.a.
	2001	n.a.	-	-	n.a.
	2002	n.a.	-	16,329	n.a.
	2003	n.a.	-	15,031	n.a.
	2004	n.a.	-	15,077	n.a.
Freight-Kilometer (Mn ton kilometer)	1997	n.a.	37	3,845	n.a.
	1998	n.a.	76	3,953	n.a.
	1999	n.a.	76	5,035	n.a.
	2000	n.a.	-	-	n.a.
	2001	n.a.	-	-	n.a.
	2002	n.a.	-	4,449	n.a.
	2003	n.a.	-	4,354	n.a.
	2004	n.a.	-	4,698	n.a.

Sources: Compiled from data submission, websites and yearbooks of AMCs' national statistical offices and relevant departments/ministries as of October 2005; UNESCAP Statistical Indicators for Asia and the Pacific 2004 Compendium (online edition as of November 2005); and UNESCAP Asia-Pacific in Figures 2004 (online edition as of May 2005).

Statistics, 1997-2004

Malaysia	Myanmar	The Philippines	Singapore	Thailand	Viet Nam
(7)	(8)	(9)	(10)	(11)	(12)
1,791	4,059	439	–	3,976	3,143
1,791	4,237	474	–	3,976	3,143
1,949	4,746	474	–	3,979	3,143
1,949	4,759	472	–	4,044	2,600
1,949	4,759	472	–	4,044	2,600
1,949	–	472	97.2	–	2,600
1,949	–	475	127.9	–	2,600
1,949	–	477	127.9	–	2,600
5,825	55,283	613	–	65,348	9,305
5,340	54,318	578	–	60,815	9,697
4,880	58,197	541	–	55,198	9,247
4,340	60,490	374	–	57,512	9,806
3,985	61,280	319	–	56,325	10,627
3,863	–	264	408,800	–	10,800
3,701	–	240	464,280	–	12,000
3,993	–	241	486,731	–	–
1,508	4,360	172	–	12,000	2,476
1,411	3,987	181	–	11,000	2,542
1,333	4,175	172	–	10,000	2,727
1,241	4,451	127	–	9,987	3,200
1,199	4,477	110	–	10,321	3,426
1,138	4,802	93	–	10,481	3,697
1,031	4,284	86	–	10,008	4,190
1,152	4,143	84	–	9,195	–
1,337	924	0,68	n.a.	3,000	1,533
992	904	–	n.a.	3,000	1,324
909	1,094	–	n.a.	3,000	1,398
918	1,219	–	n.a.	3,429	1,901
1,094	1,171	–	n.a.	3,775	2,054
1,073	1,196	–	n.a.	3,894	2,392
887	1,014	–	n.a.	4,057	2,703
1,016	885	–	n.a.	4,037	–

Table VII.4.
ASEAN Domestic Maritime Statistics:

Maritime Port and Fleet	Year	Brunei Darussalam	Cambodia	Indonesia	Lao PDR
(1)	(2)	(3)	(4)	(5)	(6)
No of Domestic Ports	1997	2	4	3,647	n.a.
	1998	2	4	3,647	n.a.
	1999	2	4	3,647	n.a.
	2000	2	10	–	n.a.
	2001	2	10	–	n.a.
	2002	2	–	–	n.a.
	2003	2	–	–	n.a.
	2004	2	–	–	n.a.
Domestic Passenger Traffic (Mn)	1997	0.07	0.11	8.98	n.a.
	1998	0.04	0.09	13.11	n.a.
	1999	0.04	0.07	18.53	n.a.
	2000	–	–	–	n.a.
	2001	–	–	–	n.a.
	2002	–	–	16.62	n.a.
	2003	–	–	14.39	n.a.
	2004	–	–	12.59	n.a.
Domestic Cargo Throughput (Metric Ton)	1997	–	0.02	184	n.a.
	1998	–	0.02	190	n.a.
	1999	–	0.01	170	n.a.
	2000	–	–	265	n.a.
	2001	–	–	253	n.a.
	2002	–	–	–	n.a.
	2003	–	–	–	n.a.
	2004	–	–	–	n.a.
Domestic Cargo Throughput (TEU ^{1/2})	1997	–	–	4,101,696	n.a.
	1998	–	–	3,640,194	n.a.
	1999	–	–	3,179,241	n.a.
	2000	–	–	–	n.a.
	2001	–	–	–	n.a.
	2002	–	–	–	n.a.
	2003	–	–	–	n.a.
	2004	–	–	–	n.a.

Sources: Compiled from data submission, websites and yearbooks of AMCs' national statistical offices and relevant departments/ministries as of October 2005; UNESCAP Statistical Indicators for Asia and the Pacific 2004 Compendium (online edition as of November 2005); and UNESCAP Asia-Pacific in Figures 2004 (online edition as of May 2005).

Number of Ports and Fleet, 1997-2004

Malaysia	Myanmar	The Philippines	Singapore	Thailand	Viet Nam
(7)	(8)	(9)	(10)	(11)	(12)
13	10	19	n.a.	12	8
13	10	19	n.a.	12	8
14	10	21	n.a.	12	8
14	9	22	n.a.	-	8
14	9	23	n.a.	-	8
14	-	23	n.a.	-	8
-	-	23	n.a.	-	8
-	-	23	n.a.	-	8
n.a.	0.13	41.41	n.a.	1.75	-
n.a.	0.10	44.11	n.a.	3.22	-
n.a.	0.12	43.23	n.a.	4.14	-
n.a.	0.20	44.37	n.a.	-	-
n.a.	0.21	43.66	n.a.	-	-
n.a.	-	49.12	n.a.	-	-
n.a.	-	51.72	n.a.	-	-
n.a.	-	53.04	n.a.	-	-
34.7	1.0	34.96	n.a.	24.52	3,707
29.6	1.0	74.93	n.a.	23.26	4,864
29.6	0.9	76.54	n.a.	n.a.	5,536
27.6	1.2	76.91	n.a.	23.34	7,124
32.0	1.3	75.10	n.a.	19.65	8,590
-	-	79.55	n.a.	-	-
39.4	-	79.43	n.a.	-	-
57.0	-	82.01	n.a.	-	-
578,743	-	1,422,576	n.a.	-	-
587,039	-	1,405,867	n.a.	-	-
502,202	-	1,411,752	n.a.	-	-
739,226	-	1,501,192	n.a.	-	-
762,552	-	1,562,408	n.a.	-	-
-	-	1,672,118	n.a.	-	-
-	-	1,683,418	n.a.	-	-
-	-	1,761,967	n.a.	-	-

Table VII.5.
ASEAN International Maritime Statistics:

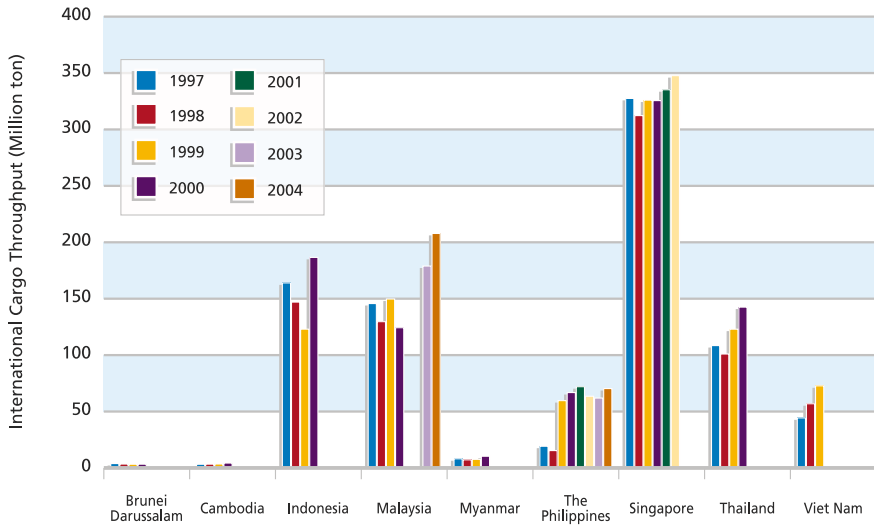
Maritime Port and Fleet	Year	Brunei Darussalam	Cambodia	Indonesia	Lao PDR
(1)	(2)	(3)	(4)	(5)	(6)
No of International Ports	1997	3	2	131	n.a.
	1998	3	2	131	n.a.
	1999	3	2	131	n.a.
	2000	1	2	-	n.a.
	2001	-	-	-	n.a.
	2002	-	-	-	n.a.
	2003	-	-	-	n.a.
	2004	-	-	-	n.a.
International Passenger Traffic (Mn)	1997	0.33	-	0.17	n.a.
	1998	0.29	-	0.21	n.a.
	1999	0.27	-	1.43	n.a.
	2000	0.02	-	-	n.a.
	2001	-	-	-	n.a.
	2002	-	-	-	n.a.
	2003	-	-	-	n.a.
	2004	-	-	-	n.a.
International Cargo Throughput (Mn Ton)	1997	1.66	1.04	164.00	n.a.
	1998	1.22	1.14	147.00	n.a.
	1999	1.06	1.26	123.00	n.a.
	2000	1.11	2.11	186.60	n.a.
	2001	-	-	-	n.a.
	2002	-	-	-	n.a.
	2003	-	-	-	n.a.
	2004	-	-	-	n.a.
International Cargo Throughput (TEUs)	1997	-	60,990	25,679,549	n.a.
	1998	-	71,589	25,740,531	n.a.
	1999	-	94,860	32,253,261	n.a.
	2000	60,976	130,435	-	n.a.
	2001	-	-	-	n.a.
	2002	-	-	-	n.a.
	2003	-	-	-	n.a.
	2004	-	-	-	n.a.

Sources: Compiled from data submission, websites and yearbooks of AMCs' national statistical offices and relevant departments/ministries as of October 2005; UNESCAP Statistical Indicators for Asia and the Pacific 2004 Compendium (online edition as of November 2005); and UNESCAP Asia-Pacific in Figures 2004 (online edition as of May 2005).

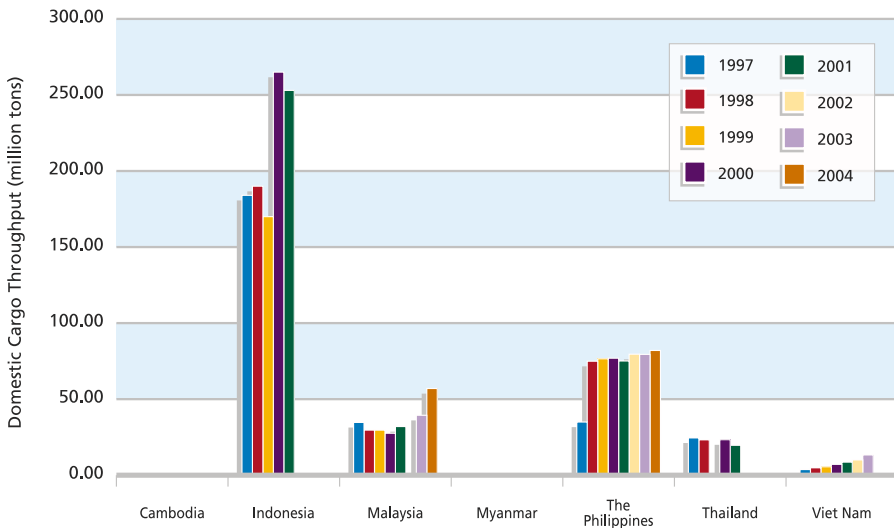
Number of Ports and Fleet, 1997-2004

Malaysia	Myanmar	The Philippines	Singapore	Thailand	Viet Nam
(7)	(8)	(9)	(10)	(11)	(12)
-	9	2	1	10	-
-	9	2	1	10	-
-	9	2	1	10	-
-	9	7	1	15	-
-	-	-	-	-	-
-	-	-	-	-	-
-	-	-	-	-	-
-	-	-	-	-	-
-	0.004	0.02	-	0.12	0.06
-	0.003	0.00	-	0.18	0.05
-	0.003	0.01	-	0.23	0.12
-	0.003	-	-	0.32	0.20
-	-	-	-	-	-
-	-	-	-	-	-
-	-	-	-	-	-
-	-	-	-	-	-
145.71	8.13	19.22	327.5	108.46	44.36
129.66	7.19	15.40	312.3	100.99	56.90
149.74	7.62	59.67	326.0	122.97	72.78
124.30	10.36	66.83	325.6	142.54	-
-	-	72.02	335.2	-	-
-	-	63.54	347.7	-	-
178.95	-	61.94	-	-	-
207.83	-	70.36	-	-	-
2,435,754	96,783	1,385,448	14,136	2,181,257	767,679
2,477,032	105,804	1,143,433	15,136	2,350,955	798,301
3,487,813	118,056	1,400,089	15,945	2,493,277	950,138
3,390,101	159,497	1,629,464	17,087	3,367,218	1,147,572
2,656,813	-	1,639,866	15,571	-	-
3,101,514	-	1,791,511	16,941	-	-
3,348,903	-	1,925,403	18,411	-	-
3,481,853	-	2,023,499	21,329	-	-

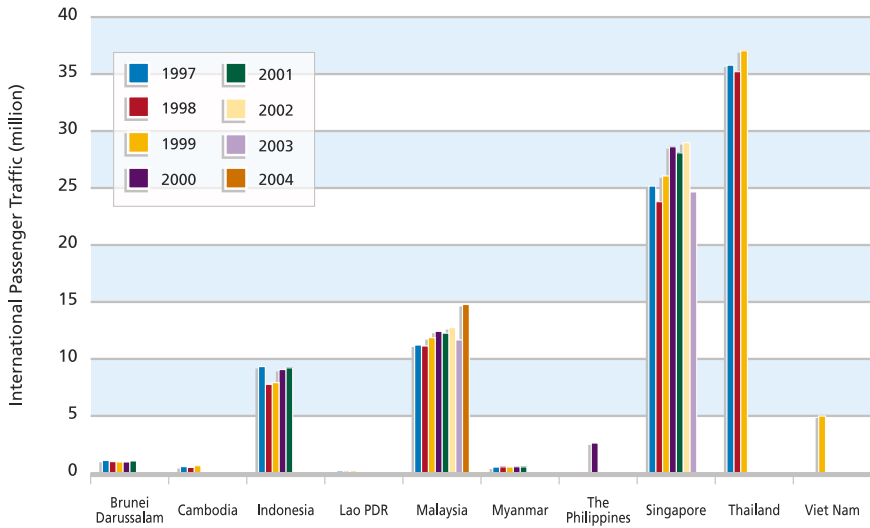
Graphic VII.3.
Trend in International Cargo Throughput in International Maritime Transportation in ASEAN Countries, 1997-2004



Graphic VII.4.
Trend in Domestic Cargo Throughput in Domestic Maritime Transportation in ASEAN Countries, 1997-2004



Graphic VII.5.
Trend in International Passenger Traffic in International Civil Aviation
in ASEAN Countries, 1997-2004



Graphic VII.6.
Trend in Domestic Passenger Traffic in Domestic Civil Aviation
in ASEAN Countries, 1997-2004

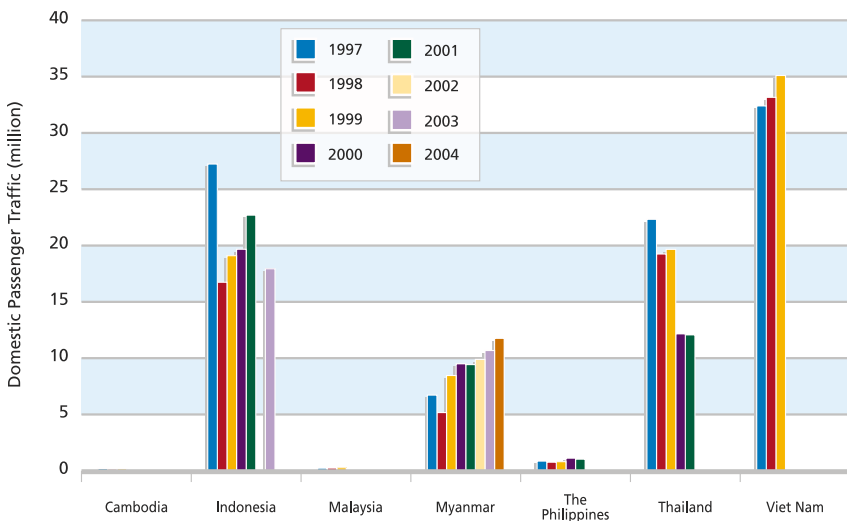


Table VII.6.
ASEAN Domestic

Civil Aviation	Year	Brunei Darussalam	Cambodia	Indonesia	Lao PDR
(1)	(2)	(3)	(4)	(5)	(6)
No of Domestic Airports	1997	n.a.	6	31	11
	1998	n.a.	6	31	11
	1999	n.a.	6	31	11
	2000	n.a.	-	-	-
	2001	n.a.	-	-	-
	2002	n.a.	-	-	-
	2003	n.a.	-	-	-
	2004	n.a.	-	-	-
Domestic Passenger Traffic ('000)	1997	n.a.	201.7	27,238	225.9
	1998	n.a.	144.8	16,744	238.6
	1999	n.a.	171.4	19,100	273.4
	2000	n.a.	-	19,674	-
	2001	n.a.	-	22,700	-
	2002	n.a.	-	-	-
	2003	n.a.	-	17,940	-
	2004	n.a.	-	-	-
Domestic Freight Traffic ('000 metric ton)	1997	n.a.	0.05	364	0.42
	1998	n.a.	0.06	279	0.60
	1999	n.a.	0.04	293	0.81
	2000	n.a.	-	302	-
	2001	n.a.	-	-	-
	2002	n.a.	-	-	-
	2003	n.a.	-	-	-
	2004	n.a.	-	-	-
No. of Aircraft Traffic	1997	n.a.	5,485	613,361	7,043
	1998	n.a.	4,498	484,375	7,626
	1999	n.a.	5,318	526,381	8,425
	2000	n.a.	-	634,908	-
	2001	n.a.	-	451,500	-
	2002	n.a.	-	-	-
	2003	n.a.	-	-	-
	2004	n.a.	-	-	-

Sources: Compiled from data submission, websites and yearbooks of AMCs' national statistical offices and relevant departments/ministries as of October 2005; UNESCAP Statistical Indicators for Asia and the Pacific 2004 Compendium (online edition as of November 2005); and UNESCAP Asia-Pacific in Figures 2004 (online edition as of May 2005).

Civil Aviation Statistics, 1997-2004

Malaysia	Myanmar	The Philippines	Singapore	Thailand	Viet Nam
(7)	(8)	(9)	(10)	(11)	(12)
14	21	93	n.a.	28	-
14	21	93	n.a.	28	-
14	21	85	n.a.	29	-
14	21	85	n.a.	33	-
14	21	87	n.a.	33	-
-	-	87	n.a.	-	-
19	-	85	n.a.	-	-
19	-	85	n.a.	-	-
6,720.2	859.2	22,330.7	n.a.	32,402.4	-
5,172.4	758.1	19,249.8	n.a.	33,161.3	-
8,460.0	808.2	19,663.3	n.a.	35,095.6	-
9,496.6	1,120.8	12,156.6	n.a.	-	-
9,429.3	1,028.7	12,066.3	n.a.	-	-
9,885.3	-	-	n.a.	-	-
10,677.0	-	-	n.a.	-	-
11,762.3	-	-	n.a.	-	-
21	10	683	n.a.	820	-
16	16	485	n.a.	769	-
17	3	652	n.a.	907	-
18	1	427	n.a.	-	-
19	3	260	n.a.	-	-
-	-	-	n.a.	-	-
-	-	-	n.a.	-	-
-	-	-	n.a.	-	-
145,331	9,110	415,919	n.a.	264,820	-
128,582	7,725	255,659	n.a.	252,270	-
120,993	9,868	360,754	n.a.	262,517	-
113,133	18,683	283,750	n.a.	-	-
120,836	16,567	294,554	n.a.	-	-
-	-	365,138	n.a.	-	-
-	-	-	n.a.	-	-
-	-	-	n.a.	-	-

Table VII.7.
ASEAN International

Indicator	Year	Brunei Darussalam	Cambodia	Indonesia	Lao PDR
(1)	(2)	(3)	(4)	(5)	(6)
No of International Airports	1997	1	1	19	1
	1998	1	1	18	2
	1999	1	1	18	2
	2000	1	1	-	-
	2001	1	1	-	-
	2002	1	1	-	3
	2003	1	1	-	3
	2004	1	1	-	3
International Passenger Traffic (000)	1997	1,095	552	10,400	162
	1998	990	481	7,916	143
	1999	957	634	7,921	160
	2000	961	-	8,159	-
	2001	1,053	-	9,217	-
	2002	-	-	-	-
	2003	-	-	-	-
	2004	-	-	-	-
Cargo Loaded (000 metric ton)	1997	1,893.0	1.50	168.6	160.1
	1998	1,195.2	2.92	171.1	90.7
	1999	979.6	7.34	165.6	35.8
	2000	1,015.0	-	170.6	-
	2001	892.0	-	147	-
	2002	1,269.9	-	-	-
	2003	1,260.5	-	-	-
	2004	1,712.9	-	-	-
Cargo Unloaded (000 ton)	1997	52.7	1.95	108.5	793.2
	1998	25.9	2.47	61.9	711.1
	1999	76.3	2.87	82.2	515.5
	2000	90.9	-	84.7	-
	2001	103.1	-	95.5	-
	2002	122.9	-	-	-
	2003	127.5	-	-	-
	2004	139.8	-	-	-
Aircraft Departures (000)	1997	-	4.5	45.5	1.5
	1998	-	4.9	36.5	1.4
	1999	-	5.8	39.6	1.4
	2000	7.7	-	41.4	-
	2001	5.5	-	41.1	-
	2002	-	-	-	-
	2003	-	-	-	-
	2004	-	-	-	-
Aircraft Arrivals (000)	1997	-	4.5	45.5	1.5
	1998	-	4.9	36.2	1.4
	1999	-	5.8	40.1	1.4
	2000	7.7	-	43.1	-
	2001	5.5	-	41.6	-
	2002	-	-	-	-
	2003	-	-	-	-
	2004	-	-	-	-

Sources: Compiled from data submission, websites and yearbooks of AMCs' national statistical offices and relevant departments/ ministries as of October 2005; UNESCAP Statistical Indicators for Asia and the Pacific 2004 Compendium (online edition as of November 2005); and UNESCAP Asia-Pacific in Figures 2004 (online edition as of May 2005).

Civil Aviation Statistics, 1997-2004

Malaysia	Myanmar	The Philippines	Singapore	Thailand	Viet Nam
(7)	(8)	(9)	(10)	(11)	(12)
5	1	-	2	28	-
5	1	-	2	28	-
6	1	-	2	29	2
5	1	4	1	5	-
5	2	4	1	5	-
-	-	4	1	-	-
6	-	4	1	-	-
6	-	4	1	-	-
11,217	515	-	25,174	35,778	-
11,139	532	-	23,804	35,212	-
11,871	521	-	26,064	37,040	4,992
12,420	537	2,618	28,619	-	-
12,257	528	-	28,094	-	-
12,754	-	-	28,979	-	-
11,665	-	-	24,664	-	-
14,778	-	-	30,354	-	-
246.4	6.29	-	639.6	494.7	-
212.6	8.95	-	632.1	482.4	-
274.8	5.45	-	743.6	532.6	93.8
284.5	6.52	172	834.2	511.0	-
319.5	6.06	144	726.4	509.0	-
337	-	-	803.3	-	-
362	-	-	808.4	-	-
404	-	-	904.5	-	-
224.9	5.18	-	696.8	325.7	-
209.4	5.74	-	651.6	286.4	-
260.6	5.74	-	756.8	374.6	-
359.9	7.53	137	848.3	315.0	-
285.7	5.41	111	780.6	301.0	-
295.6	-	-	834.5	-	-
325.7	-	-	803.1	-	-
368.1	-	-	870.6	-	-
-	3.6	-	86.4	132.4	-
-	3.4	-	82.7	126.1	-
-	3.3	-	83.0	131.3	-
-	3.2	21.3	87.1	145.2	-
-	3.0	22.9	89.7	153.2	-
-	-	-	87.4	-	-
-	-	-	77.2	-	-
-	-	-	92.5	-	-
-	3.6	-	86.3	132.4	-
-	3.4	-	82.6	126.1	-
-	3.3	-	83.0	131.3	-
-	3.2	21.3	86.9	-	-
-	3.0	23.0	89.7	-	-
-	-	-	87.4	-	-
-	-	-	77.2	-	-
-	-	-	92.4	-	-

